

# Annotated Philatelic Bibliography of the Spanish-Philippines:

## Part 3, Journals and Periodicals

### Philippine Philatelic Journal

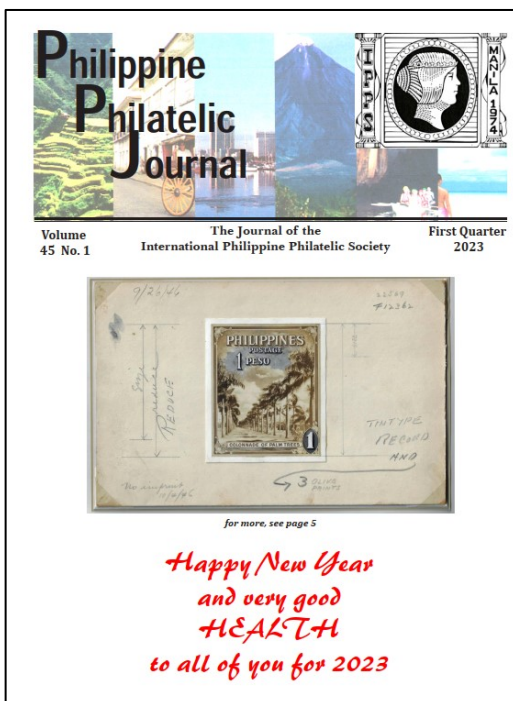
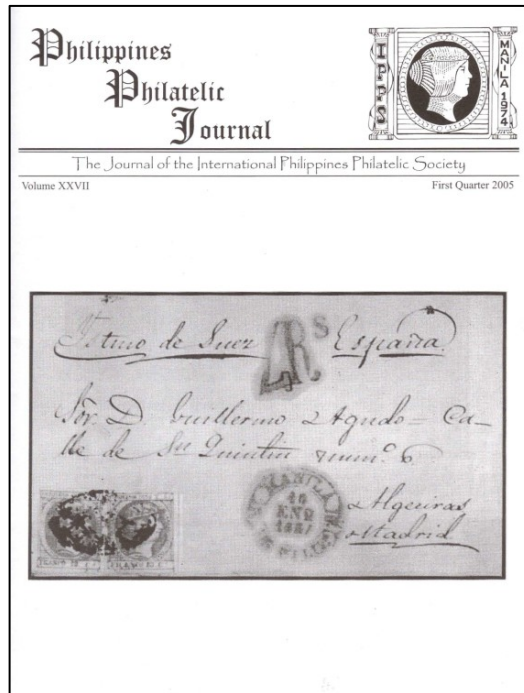
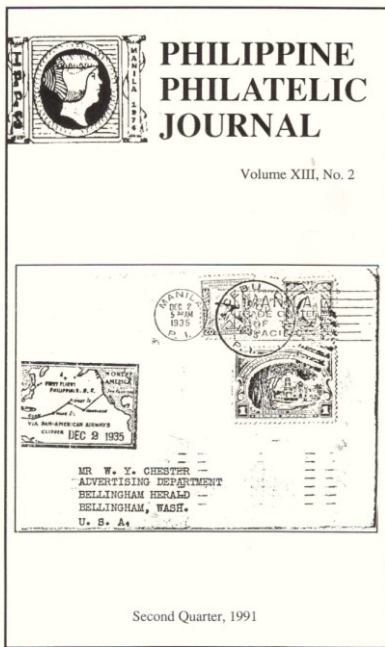
The **Philippine Philatelic Journal** was first published in 1991 and is the Journal of the International Philippine Philatelic Society (IPPS) and is published quarterly.

The **Philippine Philatelic Journal** was previously known as the **Philippine Philatelic News**. The first edition of this new title was Volume 13 No 1 for the first quarter of 1991. In 2008, the **Philippine Philatelic Society Journal** (of the Philippine Philatelic Society) merged with the **Philippine Philatelic Journal**.

Volume 14 no 2 for the second quarter of 1992 was incorrectly numbered volume 15. Volume 15 no 2 for the second quarter of 1993 was incorrectly numbered volume 16.

Volume 27 no 1 (2005) to volume 28 no 3 (2006) the cover carried the name "**Philippines Philatelic Journal**"; however, the normal title was reverted to in volume 28 no 4 (2006). Volume 46 no 4 (2024) was issued in February 2025 following the change of editor and the cover carried the name "**The Philippine Philatelic Journal**"; however, the normal title was reverted to in the subsequent issue (volume 47 no 1 (2025)).

Robert Yacano was editor between 1986 and 2008,  
Hans-Werner Becker was the editor from 2009 and the third quarter of 2024.  
Jaydie Salamat is the current editor.



# Annotated Philatelic Bibliography of the Spanish-Philippines:

## Part 3, Journals and Periodicals

The **Philippine Philatelic Journal** has received the following awards for literature:

APS Stamp Show (August (2016). Silver.  
APS Stamp Show (August (2013). Vermeil.  
NAPEX 2004. Silver.

### 1991 (volume 13) no 1 to 4

[1991 v13 n1 \(First Quarter\)](#)  
[1991 v13 n2 \(Second Quarter\)](#)  
[1991 v13 n3 \(Third Quarter\)](#)  
[1991 v13 n4 \(Fourth Quarter\)](#)

### 1992 (volume 14) no 1 to 4

[1992 v14 n1 \(First Quarter\)](#)  
[1992 v15\\* n2 \(Second Quarter\)](#) titled volume 15 in error  
[1992 v14 n3 \(Third Quarter\)](#)  
[1992 v14 n4 \(Fourth Quarter\)](#)

### 1993 (volume 15) no 1 to 4

[1993 v15 n1 \(First Quarter\)](#)  
[1993 v15 n2 \(Second Quarter\)](#) titled volume 16 in error  
[1993 v15 n3 \(Third Quarter\)](#)  
[1993 v15 n4 \(Fourth Quarter\)](#)

### 1994 (volume 16) no 1 to 4

[1994 v16 n1 \(First Quarter\)](#)  
[1994 v16 n2 \(Second Quarter\)](#)  
[1994 v16 n3 \(Third Quarter\)](#)  
[1994 v16 n4 \(Fourth Quarter\)](#)

### 1995 (volume 17) no 1 to 4

[1995 v17 n1 \(First Quarter\)](#)  
[1995 v17 n2 \(Second Quarter\)](#)  
[1995 v17 n3 \(Third Quarter\)](#)  
[1995 v17 n4 \(Fourth Quarter\)](#)

### 1996 (volume 18) no 1 to 4

[1996 v18 n1 \(First Quarter\)](#)  
[1996 v18 n2 \(Second Quarter\)](#)  
[1996 v18 n3 \(Third Quarter\)](#)  
[1996 v18 n4 \(Fourth Quarter\)](#)

### 1997 (volume 19) no 1 to 4

[1997 v19 n1 \(First Quarter\)](#)  
[1997 v19 n2 \(Second Quarter\)](#)  
[1997 v19 n3 \(Third Quarter\)](#)  
[1997 v19 n4 \(Fourth Quarter\)](#)

### 1998 (volume 20) no 1 to 4

[1998 v20 n1 \(First Quarter\)](#)  
[1998 v20 n2 \(Second Quarter\)](#)  
[1998 v20 n3 \(Third Quarter\)](#)  
[1998 v20 n4 \(Fourth Quarter\)](#)

### 1999 (volume 21) no 1 to 4

[1999 v21 n1 \(First Quarter\)](#)  
[1999 v21 n2 \(Second Quarter\)](#)  
[1999 v21 n3 \(Third Quarter\)](#)  
[1999 v21 n4 \(Fourth Quarter\)](#)

### 2000 (volume 22) no 1 to 4

[2000 v22 n1 \(First Quarter\)](#)  
[2000 v22 n2 \(Second Quarter\)](#)  
[2000 v22 n3 \(Third Quarter\)](#)  
[2000 v22 n4 \(Fourth Quarter\)](#)

### 2001 (volume 23) no 1 to 4

[2001 v23 n1 \(First Quarter\)](#)  
[2001 v23 n2 \(Second Quarter\)](#)  
[2001 v23 n3 \(Third Quarter\)](#)  
[2001 v23 n4 \(Fourth Quarter\)](#)

### 2002 (volume 24) no 1 to 4

[2002 v24 n1 \(First Quarter\)](#)  
[2002 v24 n2 \(Second Quarter\)](#)  
[2002 v24 n3 \(Third Quarter\)](#)  
[2002 v24 n4 \(Fourth Quarter\)](#)

### 2003 (volume 25) no 1 to 4

[2003 v25 n1 & 2 \(First/Second Quarter\)](#)  
[2003 v25 n3 \(Third Quarter\)](#)  
[2003 v25 n4 \(Fourth Quarter\)](#)

### 2004 (volume 26) no 1 to 4

[2004 v26 n1 \(First Quarter\)](#)  
[2004 v26 n2 \(Second Quarter\)](#)  
[2004 v26 n3 \(Third Quarter\)](#)  
[2004 v26 n4 \(Fourth Quarter\)](#)

### 2005 (volume 27) no 1 to 4

[2005 v27 n1 \(First Quarter\)](#)  
[2005 v27 n2 \(Second Quarter\)](#)  
[2005 v27 n3 \(Third Quarter\)](#)  
[2005 v27 n4 \(Fourth Quarter\)](#)

### 2006 (volume 28) no 1 to 4

[2006 v28 n1 \(First Quarter\)](#)  
[2006 v28 n2 \(Second Quarter\)](#)  
[2006 v28 n3 \(Third Quarter\)](#)  
[2006 v28 n4 \(Fourth Quarter\)](#)

# Annotated Philatelic Bibliography of the Spanish-Philippines:

## Part 3, Journals and Periodicals

### 2007 (volume 29) no 1 to 4

[2007 v29 n1 \(First Quarter\)](#)  
[2007 v29 n2 \(Second Quarter\)](#)  
[2007 v29 n3 \(Third Quarter\)](#)  
[2007 v29 n4 \(Fourth Quarter\)](#)

### 2008 (volume 30) no 1 to 4

[2008 v30 n1 \(First Quarter\)](#)  
[2008 v30 n2 \(Second Quarter\)](#)  
[2008 v30 n3 \(Third Quarter\)](#)  
[2008 v30 n4 \(Fourth Quarter\)](#)

### 2009 (volume 31) no 1 to 4

[2009 v31 n1 \(First Quarter\)](#)  
[2009 v31 n2 \(Second Quarter\)](#)  
[2009 v31 n3 \(Third Quarter\)](#)  
[2009 v31 n4 \(Fourth Quarter\)](#)

### 2010 (volume 32) no 1 to 4

[2010 v32 n1 \(First Quarter\)](#)  
[2010 v32 n2 \(Second Quarter\)](#)  
[2010 v32 n3 \(Third Quarter\)](#)  
[2010 v32 n4 \(Fourth Quarter\)](#)

### 2011 (volume 33) no 1 to 4

[2011 v33 n1 \(First Quarter\)](#)  
[2011 v33 n2 \(Second Quarter\)](#)  
[2011 v33 n3 \(Third Quarter\)](#)  
[2011 v33 n4 \(Fourth Quarter\)](#)

### 2012 (volume 34) no 1 to 4

[2012 v34 n1 \(First Quarter\)](#)  
[2012 v34 n2 \(Second Quarter\)](#)  
[2012 v34 n3 \(Third Quarter\)](#)  
[2012 v34 n4 \(Fourth Quarter\)](#)

### 2013 (volume 35) no 1 to 4

[2013 v35 n1 \(First Quarter\)](#)  
[2013 v35 n2 \(Second Quarter\)](#)  
[2013 v35 n3 \(Third Quarter\)](#)  
[2013 v35 n4 \(Fourth Quarter\)](#)

### 2014 (volume 36) no 1 to 4

[2014 v36 n1 \(First Quarter\)](#)  
[2014 v36 n2 \(Second Quarter\)](#)  
[2014 v36 n3 \(Third Quarter\) – 25 August 2014](#)  
[2014 v36 n4 \(Fourth Quarter\) – 9 November 2014](#)

### 2015 (volume 37) no 1 to 4

[2015 v37 n1 \(First Quarter\) – 1 March 2015](#)  
[2015 v37 n2 \(Second Quarter\) – 26 May 2015](#)  
[2015 v37 n3 \(Third Quarter\) – 2 August 2015](#)  
[2015 v37 n4 \(Fourth Quarter\) – 25 October 2015](#)

### 2016 (volume 38) no 1 to 4

[2016 v38 n1 \(First Quarter\) – 1 March 2016](#)  
[2016 v38 n2 \(Second Quarter\) – 30 May 2016](#)  
[2016 v38 n3 \(Third Quarter\) – 25 August 2016](#)  
[2016 v38 n4 \(Fourth Quarter\) – 30 November 2016](#)

### 2017 (volume 39) no 1 to 4

[2017 v39 n1 \(First Quarter\) – 24 February 2017](#)  
[2017 v39 n2 \(Second Quarter\) – 18 April 2017](#)  
[2017 v39 n3 \(Third Quarter\) – 28 July 2017](#)  
[2017 v39 n4 \(Fourth Quarter\) – 18 October 2017](#)

### 2018 (volume 40) no 1 to 4

[2018 v40 n1 \(First Quarter\) – 26 February 2018](#)  
[2018 v40 n2 \(Second Quarter\) – 27 June 2018](#)  
[2018 v40 n3 \(Third Quarter\) – 23 July 2018](#)  
[2018 v40 n4 \(Fourth Quarter\) – 12 November 2018](#)

### 2019 (volume 41) no 1 to 4

[2019 v41 n1 \(First Quarter\) – 23 February 2019](#)  
[2019 v41 n2 \(Second Quarter\) – 24 May 2019](#)  
[2019 v41 n3 \(Third Quarter\) – 22 August 2019](#)  
[2019 v41 n4 \(Fourth Quarter\) – 1 November 2019](#)

### 2020 (volume 42) no 1 to 4

[2020 v42 n1 \(First Quarter\) – 6 February 2020](#)  
[2020 v42 n2 \(Second Quarter\) – 11 May 2020](#)  
[2020 v42 n3 \(Third Quarter\) – 30 July 2020](#)  
[2020 v42 n4 \(Fourth Quarter\) – 12 November 2020](#)

### 2021 (volume 43) no 1 to 4

[2021 v43 n1 \(First Quarter\) - 6 March 2021](#)  
[2021 v43 n2 \(Second Quarter\) – 29 April 2021](#)  
[2021 v43 n3 \(Third Quarter\) – 5 August 2021](#)  
[2021 v43 n4 \(Fourth Quarter\) – 27 October 2021](#)

### 2022 (volume 44) no 1 to 4

[2022 v44 n1 \(First Quarter\) – 14 March 2022](#)  
[2022 v44 n2 \(Second Quarter\) – 3 May 2022](#)  
[2022 v44 n3 \(Third Quarter\) – 17 August 2022](#)  
[2022 v44 n4 \(Fourth Quarter\) – 25 October 2022](#)

Permission to make available the Philippine Philatelic Journal courtesy of the International Philippines Philatelic Society ([web site](#))

Issues from 2023 to present can be accessed by joining the International Philippines Philatelic Society ([web site](#)).

### 2023 (volume 45) no 1 to 4

[2023 v45 n1 \(First Quarter\) – 26 March 2023](#)  
[2023 v45 n2 \(Second Quarter\) – 13 May 2023](#)  
[2023 v45 n3 \(Third Quarter\) – 5 August 2023](#)  
[2023 v45 n4 \(Fourth Quarter\) – 1 November 2023](#)

## **Annotated Philatelic Bibliography of the Spanish-Philippines:**

### **Part 3, Journals and Periodicals**

#### **2024 (volume 46) no 1 to 4**

2024 v46 n1 (First Quarter) – 25 March 2024

2024 v46 n2 (Second Quarter) - 24 May 2024

2024 v46 n3 (Third Quarter) - 27 September 2024

2024 v46 n4 (Fourth Quarter) - 21 February 2025

#### **2025 (volume 47) no 1**

2025 v47 n1 (First Quarter) – 21 August 2025